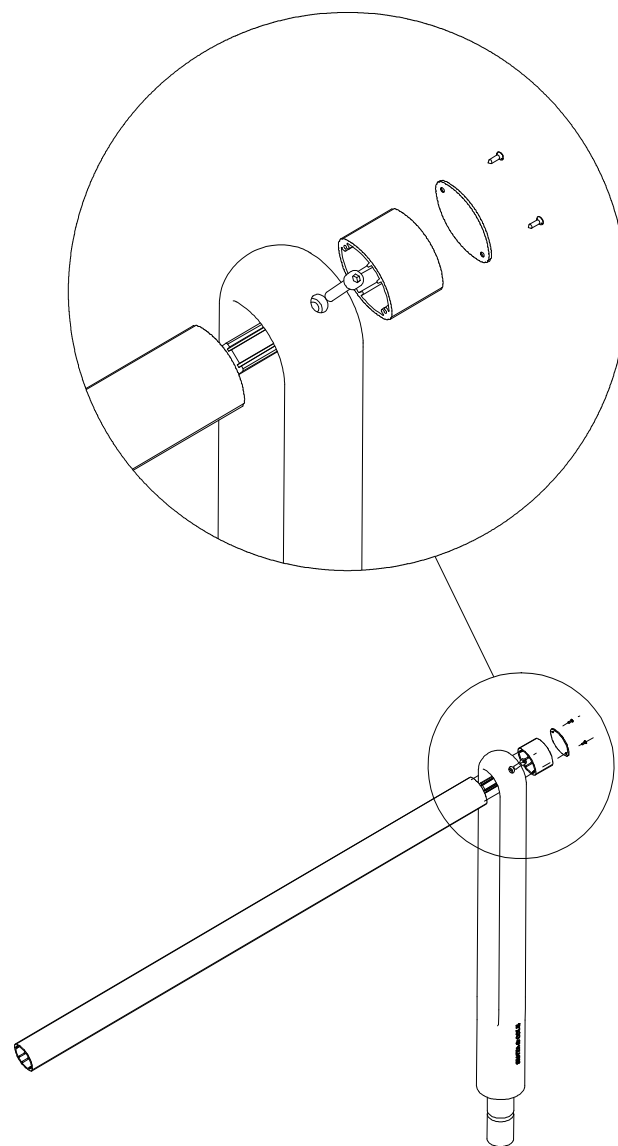


Especificaciones técnicas
Technical specifications

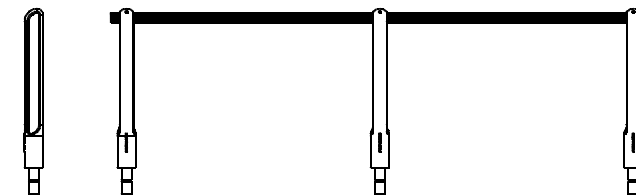
Peso/Weight		
Pilona (SAP 11): 33.7 Kg Cjnt. Baranda+pilona: 36,4 Kg		
Tornillería/Set of screws		
Tipo: DIN912 M8x35 clase 10.9 DIN7983-C ST3.5x13		
Type: DIN912 M8x35 class 10.9 DIN7983-C ST3.5x13		
	material/material	acabado/finish
Pilona/ Bollard	Fund. hierro GG-22 GG-22 iron smelting	Cataforesis, pintado negro forja Cataphoresis, painted black forge
Baranda/ Banister	Aleación alum. 6082 T6 Aluminium alloy 6082 T6	Anodizado plata mate Matt silver anodizing
Pieza/ union Piece/ union	S-275-JR S-275-JR	Cataforesis Cataphoresis



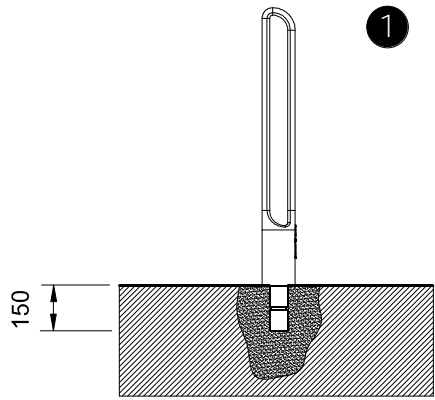
SANTA & COLE

SAMMY

diseño/design by
Oriol Guimerà
2005

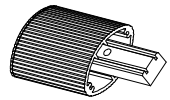


instrucciones de montaje
assembly instructions

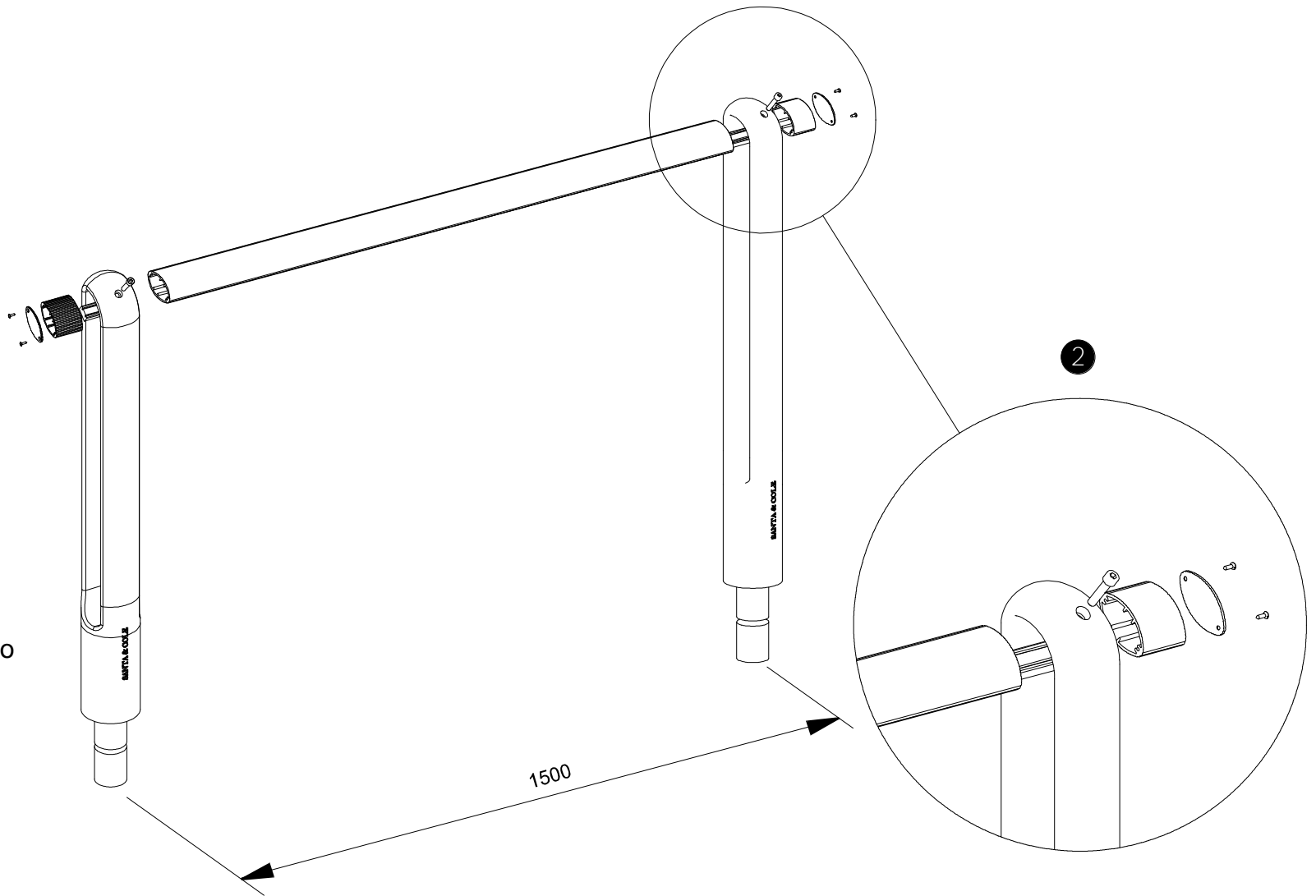


150

1



Vista detalle ángulo contrario
Detail view opposite angle



2

1500